

# Dots & Stripes Pink Covers

**Dots & Stripes Pink Covers** are an exceptional and distinct group of reversible Lt. Pink/White 80% Cotton, 20% Polyester separates offered with the youngest dancers in mind. The reversible fabric (petite contrasting white dots on one side and even Lt. Pink/White stripes on the other) lends itself to designs which accent the uniqueness of the fabric. The fabric features a soft hand that children require.

**DOTS & STRIPES  
PINK COVERS**  
start ship 11/1/16.  
Girls: \*3-4, 4-6, 6X-7,  
8-10, 12-14.  
Lt. Pink/White



## A. GIRLS 3592

PULLOVER HAS REVERSED TEXTURE LONG SLEEVES FEATURING OPTIONAL THUMB HOLES AND A FLATTERING V-FRONT BATEAU NECKLINE WITH CONTRAST BINDING TRIM ACCENTUATING THE COLOR OF THE DOTS.



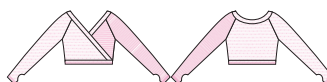
## B. GIRLS 3596

SHORT HAS AN OPTIONAL ROLL-DOWN WAISTBAND THAT REVEALS THE REVERSED TEXTURE WITH CONTRAST BINDING TRIM ACCENTUATING THE COLOR OF THE DOTS.



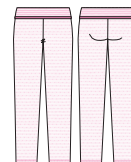
## C. GIRLS 3591

CROP PULLOVER HAS REVERSED TEXTURE HALF BODY WITH LONG SLEEVES FEATURING OPTIONAL THUMB HOLES AND CONTRAST BINDING TRIM ACCENTUATING THE COLOR OF THE DOTS.



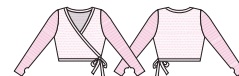
## D. GIRLS 3597

PANT HAS AN OPTIONAL ROLL-DOWN WAISTBAND THAT REVEALS THE REVERSED TEXTURE WITH CONTRAST BINDING TRIM ACCENTUATING THE COLOR OF THE DOTS.



## E. GIRLS 3598\*

WRAP FRONT SWEATER HAS REVERSED TEXTURE LONG SLEEVES FEATURING OPTIONAL THUMB HOLES AND A SIDE TIE CLOSURE WITH MATCHING BINDING TRIM.



\*Fabric shown may not be actual color representation.