

**Contemporary Warfare** is a type of Liturgical Dance style to express Battling. Dark colors are worn for this style of dance performed with strong, sharp movements such as stomping, kicking, jabbing, punching and pulling down. The choice of clothing is important to the dance and its movements. These products have multifunctional uses for other dance styles and streetwear.

**CONTEMPORARY  
WARFARE**  
is in stock.

# Contemporary Warfare

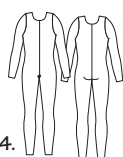


**A. ADULTS MI217 WOMENS MI217XX  
GIRLS MI117**

MicroTECH™ LONG SLEEVE UNITARD.  
90% Microfiber Polyester,  
10% Spandex

Black Orange  
Forest Green Purple  
Gold Royal  
Hot Pink Scarlet  
Kelly Green White  
Nude

**AVAILABLE  
2X-3X!**

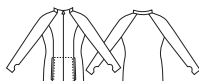


Adults: XS, S, M, L, XL.  
Womens: 2X, 3X.  
Girls: 4-6, 6X-7, 8-10, 12-14.

**C. ADULTS T5000 GIRLS T3000  
MENS TM5000 BOYS TB3000**

CUSTOM ProWEAR™ OR MicroTECH™  
POLYESTER RAGLAN SLEEVE JACKET  
HAS SIDE SEAM POCKETS AND FEAT-  
URES OPTIONAL THUMB HOLES IN  
SLIGHTLY LONGER SLEEVES AND A  
CONTRAST WHITE OR BLACK ZIPPER.

Refer to pg. 110 for  
colors & style information.



**B. ADULTS 616 WOMENS 616XX  
GIRLS 0616**

DRAPEY PANT HAS A FULL FLUID  
MOVING FIT.  
96% Rayon, 4% Spandex

Black  
Heather

Adults: XS, S, M, L, XL.  
Womens: 2X, 3X.  
Girls: 8-10, 12-14.



**D. ADULTS MI0229 WOMENS MI0229XX  
GIRLS MI0129**

**SNAP CROTCH!** MicroTECH™ LONG SLEEVE  
LEOTARD FEATURES A SLIGHTLY HIGHER  
NECKLINE AND A SELF LINED FRONT.  
90% Microfiber Polyester, 10% Spandex

Black  
White

Adults: XS, S, M, L, XL.  
Womens: 2X, 3X, 4X.  
Girls: 8-10, 12-14.



**E. ADULTS L200 GIRLS L100**

KNEE-HI SHOE/LEG COVERS HAVE  
A HALF CONSTRUCTED SUEDE SOLE  
FRONT BOTTOM THAT ALLOWS THE  
FOOT TO SLIP SECURELY INTO PLACE.  
80% Nylon, 20% Spandex

Galaxy Gold (GLD)  
Jupiter Red (RED)  
Mercury Silver (SIL)  
Meteor White (WHT)  
Solar Black (BLK)



Adults: XS-S, M-L, XL-2X.  
Girls: M-L (8-10), XL (12-14).