

Full Body Unitards, *Light-Up and Plain* are made of MicroTECH™ 90% Microfiber Polyester, 10% Spandex and designed to fit females and males alike, via a carefully engineered construction and fit.

Full Body Unitards

NEW
SPECIAL
PRICE!

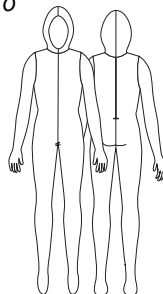
A. ADULTS T280 GIRLS T180

UNISEX HOODED UNITARD HAS A BUILT-IN GLOVE AND ZIPPER CLOSURE THAT RUNS FROM THE TOP OF THE HEAD DOWN TO THE WAIST. THE UNIQUE FOOT FEATURES A STURDY SEWN-IN SUEDE FRONT SOLE FOR OPTIMUM COMFORT, DURABILITY AND GRIPPING ACTION. UNITARD IS DESIGNED TO BE WORN WITH OUR OPTIONAL HEAD COVERS FOR THE DANCER WHO WANTS TO BE COVERED FROM HEAD TO TOE. BLACK BODY FEATURES A BLACK SUEDE SOLE. OTHER COLORS NATURAL SUEDE SOLE.

- | | |
|------------------------------|-------------|
| * Black (w/Black suede sole) | Navy |
| * Bright Royal | * Nude |
| Burgundy | Orange |
| Forest Green | * Purple |
| Gold | Raspberry |
| Hot Pink | * Scarlet |
| Kelly Green | * Turquoise |
| Lemon | * White |
| Mint | |

* In stock Adult sizes/colors starting 2/1/16.

6 In-Stock
Colors!



B. ADULTS T282 GIRLS T182

POWER MESH HEAD COVER DRAPES GENTLY TO THE SHOULDERS AND IS DESIGNED TO BE WORN ALONE, UNDER A HOODED UNITARD OR WITH A PRODUCT OF CHOICE.

80% Nylon, 20% Spandex

Adults: XS-S, M-XL, 2X-3X.

Girls: S (4-7), M (8-12), L (14-16).

- | | |
|--------------|-----------|
| Black | Orange |
| Bright Royal | Purple |
| Hot Pink | Raspberry |
| Lemon | Scarlet |
| Mint | Turquoise |
| Nude | White |



OPEN
STOCK
STYLE



*Fabric shown may not be actual color representation.