

Knitwear is made of a variety of soft, machine washable, gentle cycle, cut and sewn fabrics carefully selected and made into key dancewear silhouettes which offer warmth during warm-ups and class. Wear to and from the dance studio for an easy change.

KNITWEAR
is in stock.

Girls:
*3-4
4-6
6X-7
8-10
12-14

Knitwear



A. 45*

WRAP SWEATER HAS EXTRA LONG SLEEVES.
100% Rayon

Black
Lt. Blue
Lt. Pink



B. 3201*

LONG SLEEVE WRAP SWEATER IS EDGE FINISHED WITH SELF BINDING LEADING TO AN IN-POSITION SECURE, NON-SLIP TIE CLOSURE.
90% Cotton, 10% Spandex

Black
Lt. Blue
Lt. Pink



C. 3105

LACE LONG SLEEVE DURABLE PULLOVER HAS A MATCHING ATTACHED GATHERED POWER MESH RUFFLE HEM TRIM.
Lace Body: 100% Nylon
Power Mesh Trim: 82% Nylon, 18% Spandex

Black
Lt. Blue
Lt. Pink



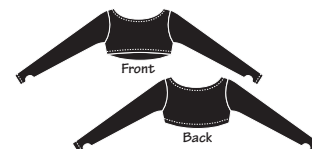
D. ADULTS 269 TWEENS 0269

LIGHTWEIGHT LONG SLEEVE SHRUG PULLOVER IS EXCEPTIONALLY SOFT, DURABLE, IDEAL FOR LAYERING AND PERFORMANCE ENHANCED.

97% Polyester, 3% Spandex

Black

Adults: XS, S, M, L, XL, 2X.
Twins: 8-10, 12-14.



*Fabric shown may not be actual color representation.