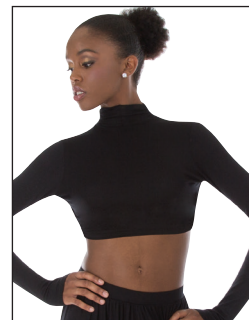


Fashion Covers are ultra soft and lightweight separates ideal for teamwear, cover-ups or any wardrobe addition.

FASHION COVERS
are in stock.

Fashion Covers



CONVERTIBLE
OPTION

A. ADULTS/TWEENS 8510

TWO COLOR ZIP FRONT JACKET HAS A STAND-UP COLLAR AND OPTIONAL FINGER LOOPS.

50% Polyester, 46% Rayon, 4% Lycra®

Dark Heather/Black

Adults/Tweens: 12-14,
XS, S, M, L, XL, 2X.



B. ADULTS 8550 TWEENS 4550

moveTECH™ CONVERTIBLE MOCK NECK LONG SLEEVE SHRUG FEATURES OPTIONAL THUMB HOLE OPENINGS.

96% Rayon, 4% Spandex

Black
Heather (Adults only)

Adults: XS, S, M, L, XL, 2X.
Tweens: 8-10, 12-14.

Instructional hangtag
features styling option.



*Fabric shown may not be actual color representation.