

All Dance Cover-Ups consist of soft, lightweight pullovers and soft medium weight French Terry bottoms. Black is 48% Polyester, 47% Rayon, 5% Spandex and the Charcoal Heather is 60% Polyester, 35% Rayon and 5% Spandex. The trending styles are designed to fit the way dancers like.

ALL DANCE COVER-UPS
start ship 2/1/16.
Adults: XS, S, M, L, XL.

All Dance Cover-Ups



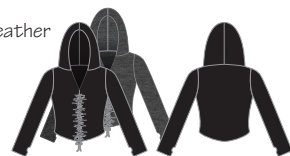
A. ADULTS 5182
3/4 SLEEVE CROP PULLOVER FEATURES A LOW WRAP-BACK WITH CUT-OUT STYLING.
Black
Charcoal Heather



C. ADULTS 5184
KEYHOLE WRAP RACERBACK PULLOVER FEATURES A LOOSE TRENDY FIT AND BINDING TRIM.
Black w/Black
Charcoal Heather w/Black



E. ADULTS 5180
LONG SLEEVE HOODED PULLOVER FEATURES AN ADJUSTABLE BLACK DRAWSTRING FRONT.
Black
Charcoal Heather



B. ADULTS 5185
LONG SLEEVE PULLOVER FEATURES A BATEAU NECKLINE AND OPTIONAL THUMB HOLES.
Black
Charcoal Heather



D. ADULTS 5181
FRENCH TERRY SHORT HAS AN ELASTICIZED WAISTBAND, ROOMY SIDE FRONT POCKETS AND BINDING TRIM.
Black w/Black
Charcoal Heather w/Black



F. ADULTS 5183
FRENCH TERRY PANT HAS AN ELASTICIZED WAISTBAND, CUFFS AND FEATURES ROOMY SIDE FRONT POCKETS.
Black w/Black
Charcoal Heather w/Black



*Fabric shown may not be actual color representation.