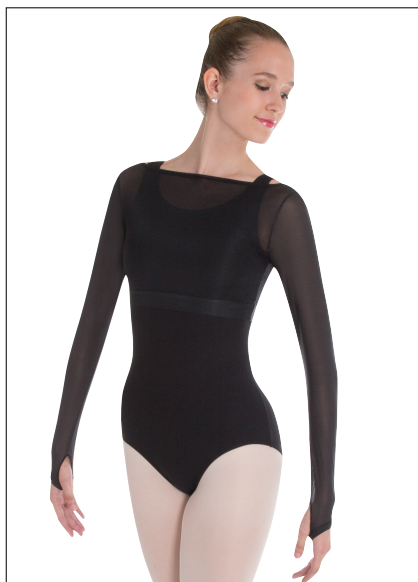


Lightweight Shrug is made of exceptionally soft 97% Microfiber Polyester, 3% Spandex that feels like a second skin. The weight is ideal for warm-ups or layering and when this product is touched you can immediately feel its softness, durability and performance!

Lightweight Shrug



LIGHTWEIGHT SHRUG
start ship 11/15/14.

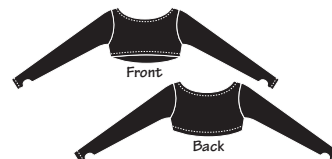
A. ADULTS 269 TWEENS 0269

LIGHTWEIGHT LONG SLEEVE SHRUG PULLOVER.

Black

Adults: XS, S, M, L, XL, 2X.

Tweens: 8-10, 12-14.



Bouclé Legwarmer is made of a very soft and fuzzy bouclé yarn of 97% Microfiber Polyester, 3% Spandex. This super comfy stirrup legwarmer is worn over or under pointe shoes, slippers or shoes.

Bouclé Legwarmer



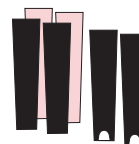
BOUCLÉ LEGWARMER
start ship 11/15/14.

B. ONE SIZE 198

22" (56 cm) LEGWARMER FEATURES A HEEL OPENING.

Black

Theatrical Pink



totalSTRETCH® Brief is an 88% Matte Nylon, 12% Lycra® ultra soft, supportive and lightweight flesh tone brief intended to be worn as a second skin under tight fitting clothing.

totalSTRETCH® Brief



totalSTRETCH® BRIEF
is in stock
unless indicated.
Adults: XS, S, M, L, XL.

C. ADULTS 264

BIKINI BRIEF FEATURES A CENTER BACK SEAM (NO SIDE SEAMS) FOR MAXIMUM COMFORT AND SUPPORT AND A memory-STRETCH™ CROTCH LINING.

Dark Nude
Nude

Dark Nude start ship
2/15/15.

DARK NUDE NEW COLOR!

