

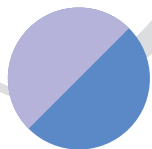
Premiere Asymmetrical Performance Dresses

Body: 90% Microfiber Polyester, 10% Spandex

Power Mesh Body Overlay & Skirts: 82% Nylon, 18% Spandex

Power Mesh Bra Lining: 80% Nylon, 20% Spandex

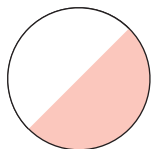
Premiere Asymmetrical
Performance Dresses
are in stock,



Lilac w/
Periwinkle



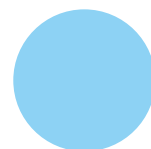
Mint w/
Seafoam



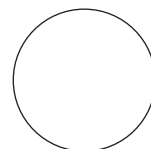
White w/
Lt. Peach



Lemon



Lt. Blue



White



Style P731

Mock Wrap Asymmetrical Short Dress

- * Mock wrap power mesh overlay bodice is shirred into side seam
- * Camisole shoulder strap styling
- * Wide shirred front shoulder strap has a self loop detail
- * Skirt has darker color contrast underlayer
- * Solid back & bodice under front
- * Self lined bodice front

Adults: XS, S, M, L, Tall



Style P732

Asymmetrical Camisole Shirred Bodice Short Dress

- * Soft U-front neckline
- * Side shirred bodice
- * Asymmetrical longer skirt front has a high side split
- * Power mesh skirt has soft gathers
- * Power mesh built-in bra lining

Adults: XS, S, M, L, Tall

Tweens: 8-10, 12-14



*Fabric shown may not be actual color representation.