

Graceful Glissade

Graceful Glissade are stunning performance dance dresses that outfit adults and girls in graceful elegance. The iridescent ruffle mesh bodice is 85% Polyester, 10% Metallic, 5% Spandex rows of delicate vertical ruffles on a tie-dye mesh ground. The bodice lining and attached brief are coordinating 92% Microfiber Polyester, 8% Spandex Sea Breeze. The softly gathered 100% Nylon chiffon skirt has a Mint under layer and two Lt. Blue top layers for color variation to match the tie-dye ambience. **Located on page 180.**



GRACEFUL GLISSADE
1st start ship 4/20/12.

Place order by Friday
for shipping in 2 weeks.

1 pc. minimum per style.

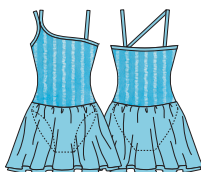
Adults: XS, S, M, L, XL, 2X.

Girls: 4-6, 6X-7,
8-10, 12-14.

Tie-Dye Blue/Mint

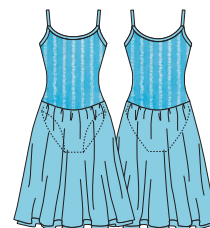
ADULTS **T6205** GIRLS **T3205**

SHORT DANCE DRESS HAS ASYMMETRICAL STYLING WITH A BACK CROSS STRAP, RUFFLE BODICE WITH A SOFT, FULL FLOWING NYLON CHIFFON SHORT ATTACHED SKIRT AND A BALLET CUT LEOTARD BODY.



ADULTS **T6204** GIRLS **T3204**

LONG CAMISOLE DANCE DRESS HAS A RUFFLE BODICE WITH A SOFT, FULL FLOWING NYLON CHIFFON MID-CALF LENGTH ATTACHED SKIRT AND A BALLET CUT LEOTARD BODY.



Ballet Grande is a group of tutus featuring a stunning 100% Polyester Black velvet flocked lace with metallic highlights. Black 92% Polyester, 8% Spandex velvet bodies have a self 92% Microfiber, 8% Polyester attached full cut brief to make the Magenta or Lt. Pink 100% Nylon soSOFT™ tulle underlay project a new ambience in classical dancewear. **Located on page 179.**



BALLET GRANDE
*New style 1st start
ship date 4/20/12.

Place order by Friday
for shipping in 2 weeks.

1 pc. minimum per style.

Adults: XS, S, M, L, XL.

Girls: 4-6, 6X-7,
8-10, 12-14.

Unless indicated.

ADULTS **T6200** GIRLS **T3200**

SWEETHEART NECK BALLET TUTU DRESS HAS A FLATTERING PRINCESS SEAM BLACK VELVET BODICE THAT FEATURES A memorySTRETCH™ FRONT LINING AND ADJUSTABLE, DETACHABLE BLACK OR SUNTAN SHOULDER STRAPS. THE FULL FLOCKED VELVET LACE SKIRT HAS THREE UNDER LAYERS OF MAGENTA TULLE.



ADULTS **T6201** GIRLS **T3201**

BLACK VELVET TUTU HAS A FLATTERING FRONT PRINCESS SEAM BODICE WITH A FLOCKED LACE FRONT PANEL AND AN UNDERLAYER FOR A STUNNING EFFECT AND FEATURES ADJUSTABLE, DETACHABLE BLACK OR SUNTAN SHOULDER STRAPS. THE FULL FLOCKED VELVET LACE SKIRT HAS THREE UNDER LAYERS OF MAGENTA TULLE.



ADULTS **T6202*** GIRLS **T3202***

TANK TUTU HAS A FLATTERING PRINCESS SEAM BLACK VELVET BODICE FEATURING A LT. PINK CENTER FRONT UNDERLAYER. THE FULL FLOCKED VELVET LACE SKIRT HAS TWO LT. PINK TULLE UNDER LAYERS.



Includes
2 Sets of Straps!
Black & Suntan

Ballet Grande

NEW STYLE!