

**Hooded Unitard & Head Covers** fit a variety of sizes and shapes through careful pattern engineering. The opaque bodies are made of 92% Microfiber Polyester, 8% Spandex. Ideal for costuming and performances in a choice of 20 standard and bright colors.

# Hooded Unitard & Head Covers



*Sewn-in  
Suede Sole*



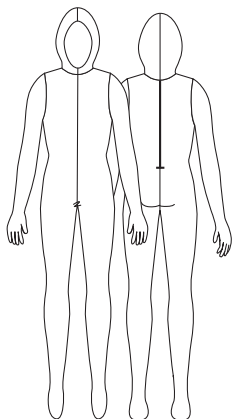
*Sewn-in  
Suede Sole*



## **A. ADULTS T280 GIRLS T180**

UNISEX HOODED UNITARD HAS A BUILT-IN GLOVE AND ZIPPER CLOSURE THAT RUNS FROM THE TOP OF THE HEAD DOWN TO THE WAIST. THE UNIQUE FOOT FEATURES A STURDY SEWN-IN SUEDE FRONT SOLE FOR OPTIMUM COMFORT, DURABILITY AND GRIPPING ACTION. UNITARD IS DESIGNED TO BE WORN WITH OUR OPTIONAL HEAD COVERS FOR THE DANCER WHO WANTS TO BE COVERED FROM HEAD TO TOE. BLACK BODY FEATURES A BLACK SUEDE SOLE, OTHER COLORS NATURAL SUEDE SOLE.

Adults: XS, S, M, L, XL, 2X, 3X.  
Girls: 4-6, 6X-7, 8-10, 12-14.



*\*Fabric shown may not be actual color representation.*