

**Ballet Romance** is two feminine lace ballet tutu dresses consisting of 100% stretch Nylon floral lace bodices lined with a supportive matching 82% Nylon, 18% Lycra® ballet cut brief and full, ultra soft, matching 100% Nylon soSOFT™ shimmer tulle skirt.



**BALLET ROMANCE**  
**\*New Style & White**  
**1st start ship 5/1/12.**  
*Place order by Friday*  
*for shipping in 2 weeks.*  
**1 pc. minimum per style.**  
**Adults: XS, S, M, L, XL**  
**Girls: 4-6, 6X-7, 8-10, 12-14.**  
 Ivory  
 \*White

**Includes**  
**2 Sets of Straps!**  
 Ivory or White & Suntan

**New Color**  
**WHITE**

# Ballet Romance

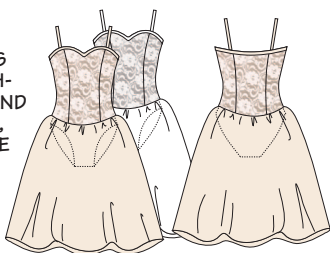


Adjustable Shoulder Straps



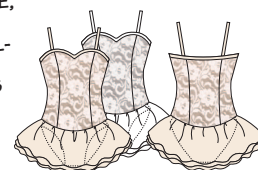
## A. ADULTS T5181 GIRLS T3181

SWEETHEART NECK BALLET TUTU DRESS HAS A FLATTERING PRINCESS SEAM BODICE, ADJUSTABLE, DETACHABLE MATCHING (IVORY OR WHITE) AND SUNTAN SHOULDER STRAP OPTIONS, A SUPPORTIVE LACE COVERED BODICE AND FEATURES A SHIMMER TULLE LAYERED SKIRT.



## B. ADULTS T5182\* GIRLS T3182\*

SWEETHEART NECK BALLET TUTU HAS A FLATTERING PRINCESS SEAM BODICE, ADJUSTABLE, DETACHABLE MATCHING (IVORY OR WHITE) AND SUNTAN SHOULDER STRAP OPTIONS, A SUPPORTIVE LACE COVERED BODICE AND FEATURES A SHIMMER TULLE LAYERED SKIRT.



**NEW STYLE!**

\*Fabric shown may not be actual color representation.