

totalSTRETCH® Under Wraps Additions are made of 88% Matte Nylon, 12% Lycra® ultra soft bodies teamed with 80% Nylon, 20% Spandex Power Mesh inserts, straps and back for supportive and lightweight flesh tone bodywear intended to be w second skin under tight fitting clothing. The **removable adjustable and detachable straps are see-through elastic** that reflects the color of the wearer's skin tone. The Hot Short has one center back seam (no side seams) for a smooth fit. The Padded Bust bodies are designed to uplift and enhance a dancer's bustline naturally.

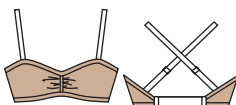
totalSTRETCH® UNDER
WRAPS ADDITIONS
are in stock.
Adults: XS, S, M, L, XL.
Nude



A. ADULTS 292

BODY HUGGING, UPLIFTING BANDEAU PADDED BRA HAS A CONCEALED DRAW-STRING, ADJUSTABLE FRONT AND CAN BE WORN AS A CONVERTIBLE, HALTER OR TANK STYLE WITH SEE-THROUGH ADJUSTABLE AND REMOVABLE ELASTIC STRAPS THAT SLIP INTO STRAP PLACEMENT POINTS. THE BACK IS A STRONG DURABLE, CLEAR BAND.

ADJUSTABLE
PADDED FRONT



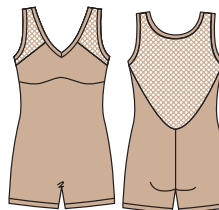
B. ADULTS 289

SECURE AND DISCREET FITTING HOT SHORT HAS ONE CENTER BACK SEAM, A FOLD-OVER ELASTIC WAISTBAND AND FEATURES GRIPPER ELASTIC HEMS FOR A SECURE FIT.



C. ADULTS 288

BODY BRIEF HAS A HUGGING FIT, UPLIFTING PADDED BUILT-IN BRA, POWER MESH SHOULDERS AND BACK WITH FOLD-OVER ELASTIC EDGES FOR A SMOOTH FINISH.



PADDED
BUST